

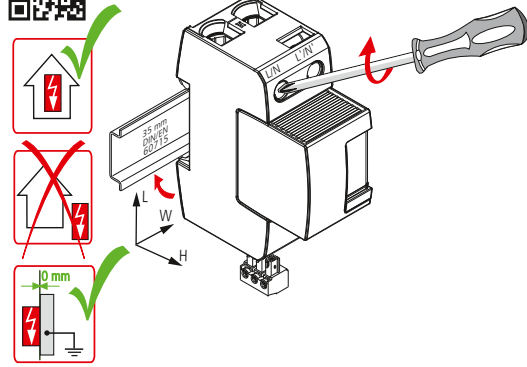
DEHNsecure M DSE M 1 ... (FM)

- DE Einbauanleitung
- GB Installation instructions
- IT Istruzioni di montaggio
- FR Instructions de montage
- NL Montagehandleiding
- ES Instrucciones de montaje
- PT Instruções de montagem
- DK Monteringsvejledning
- SE Monteringsanvisning
- FI Asennusohje
- GR Οδηγίες συναρμολόγησης
- PL Instrukcja montażu
- CZ Montážní návod
- TR Kurulum Talimatları
- RU Инструкция по монтажу
- CN 安装说明
- HU Szerelési útmutató
- JP 設置説明書



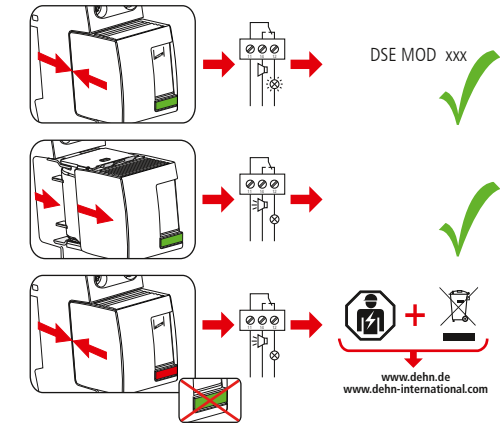
1 IEC 61643-11...
1 EN 61643-11...

Pozidriv®Z2 7 Nm

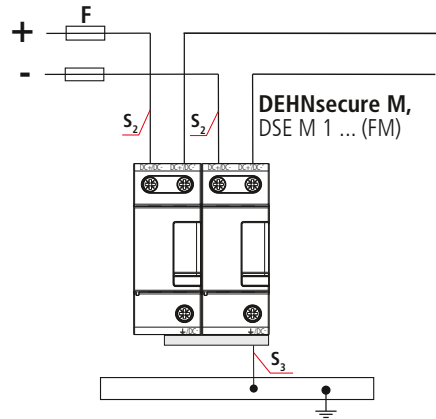


	DSE M 1 60 (FM)	DSE M 1 220 (FM)	DSE M 1 242 (FM)
U _c	DSE MOD 60	DSE MOD 220	DSE MOD 242
I _{SCCR}	60 V/DC	220 V/DC	242 V/DC
I _{imp} 10/350 μs		25 kA DC	
max. 1)		125 A gG	
max. 2)		250 A gG	
θ°		-40°C ... + 80°C (... +60°C 1)	
φ		5% ... 95%	
I _{FE}		<< 10 μA	
IP 3)		20	
L x W x H	90 mm x 36 mm x 73 mm		

max. DC+/DC-, /DC-	35 mm ²	50 mm ²	
max. DC+/DC-,	25 mm ²	35 mm ²	
min. DC+/DC-,		10 mm ²	
DC+/DC-, /DC-			16 mm ² Cu ≥ 15.5 mm

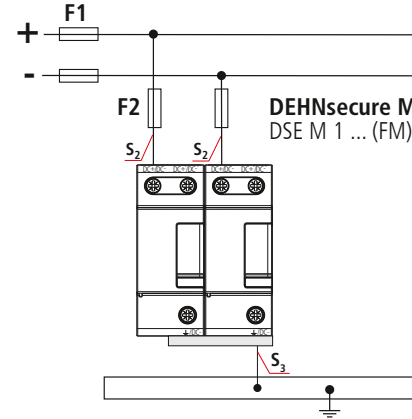


1) Isolierte Systeme



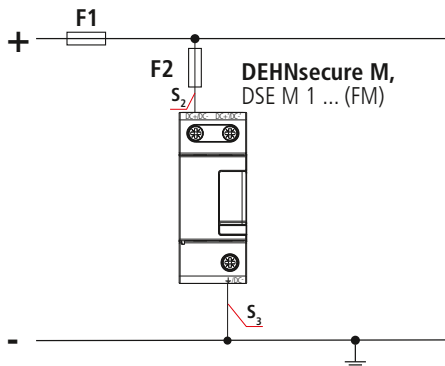
DEHNsecure M, DSE M 1 ... (FM)	A gG	S ₂ / mm ²	S ₃ / mm ²
F ≤ 125 A gG	25	10	16
	35	10	16
	40	10	16
	50	10	16
	63	10	16
	80	16	16
	100	25	25
	125	35	35

2) Isolierte Systeme

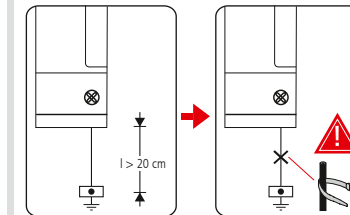
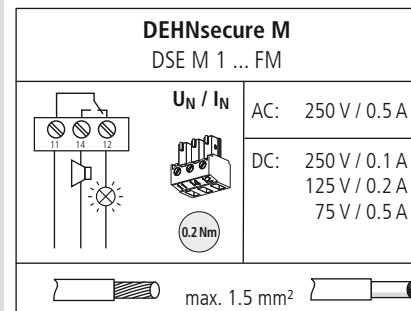


Short-circuit protection / Kurzschlußschutz		
F1 / F2	S ₂ / mm ²	S ₃ / mm ²
...80 A	10	16
100...125 A	16	16
160 A	25	25
200...250 A	35	35

2) Geerdete Systeme



Short-circuit protection / Kurzschlußschutz		
F1 / F2	S ₂ / mm ²	S ₃ / mm ²
...80 A	10	16
100...125 A	16	16
160 A	25	25
200...250 A	35	35



DSE M 1 242 (FM) kann unter Verwendung einer max. Vorsicherung von 10 A gG an einer maximalen AC-Dauerspannung von 253 Volt betrieben werden!

DSE M 1 242 (FM) can be operated on a maximum continuous operating a.c. voltage of 253 V if a max. backup fuse of 10 A gG is used!

