

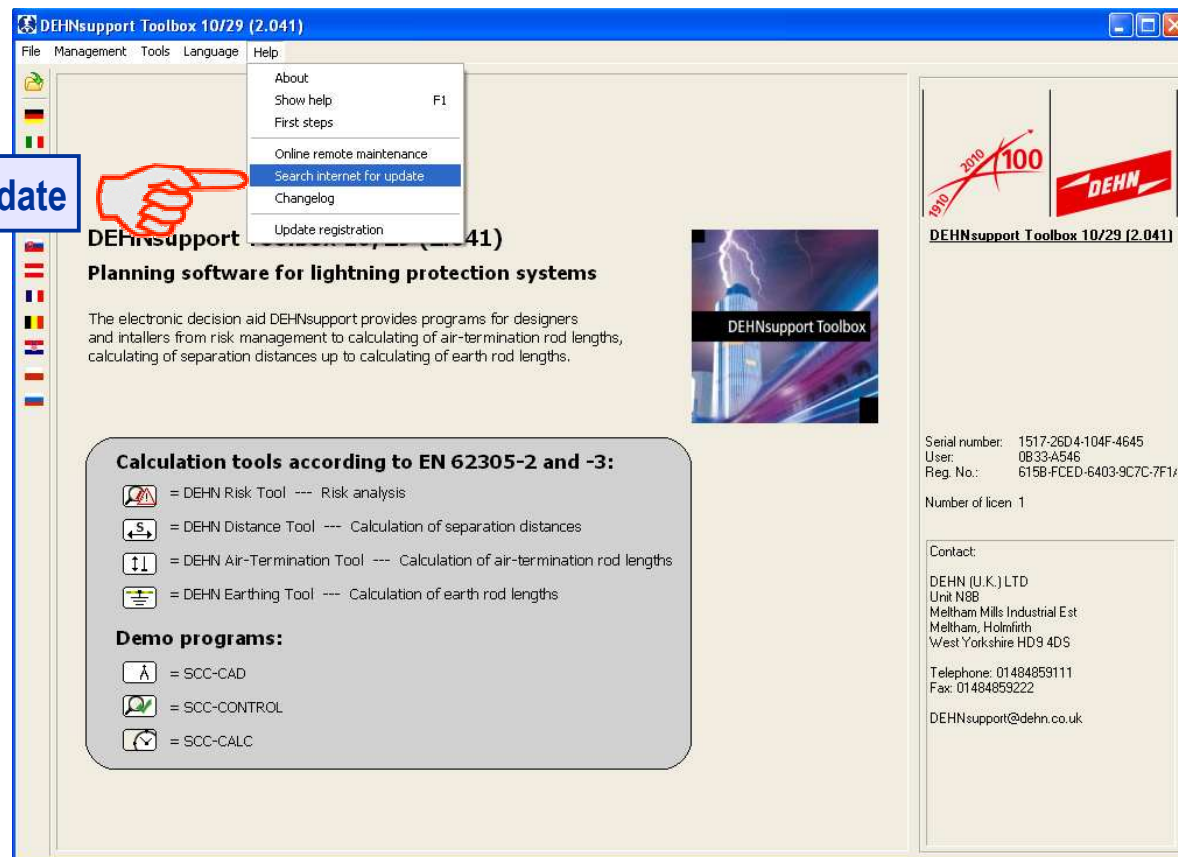
Info on version 2.041

Bug fixing



Update installation from 2.040 to 2.041

1. Installing update

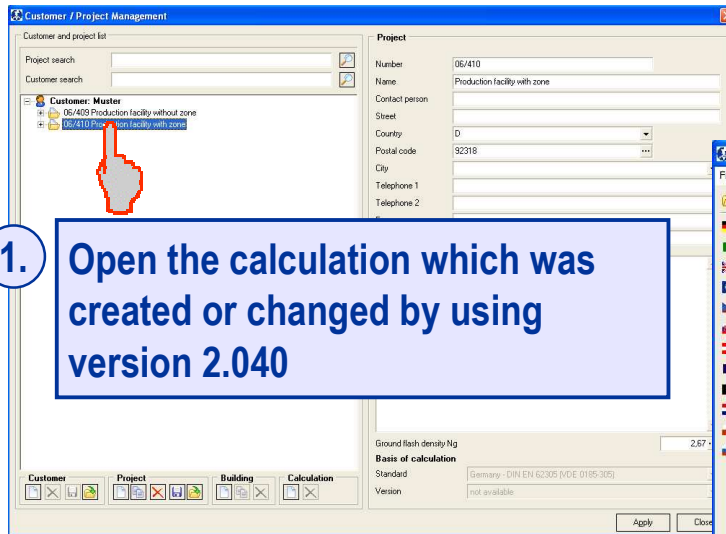


Info on version 2.041

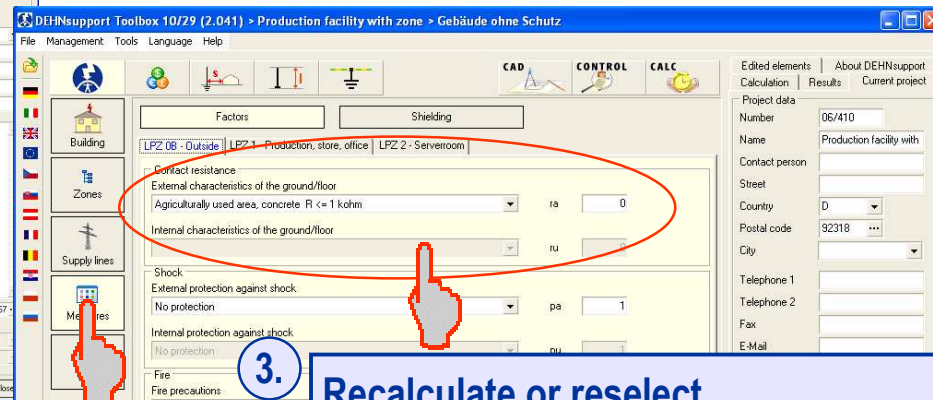
Bug fixing



1. Measures / edit components r_a and r_u



1. Open the calculation which was created or changed by using version 2.040



2. Activate Measures

3. Recalculate or reselect values for components r_a and r_u
IMPORTANT: Values have to be displayed. Check every LPZ/ zone

IMPORTANT: Values have to be edited for every option (with/without protection)!



Info on version 2.041

Bug fixing



2. Loss / edit components L_a and L_u

1. Activate Loss

2. Recalculate or reselect values for components L_a and L_u
IMPORTANT: Values have to be displayed

Risk	Human life	Service to the public	Cultural heritage
R1	2,85E-04	4,64E-03	8,16E-05
R2	1E-5	0,001	0,001
R3			8 %

IMPORTANT: Values have to be edited for every option (with/without protection)!

Ground flash density without addition: N_{gB} 2,67 per km² / year

Addition in percent: N_{aB} 25,00 %

Ground flash density: N_g 3,34 per km² / year

